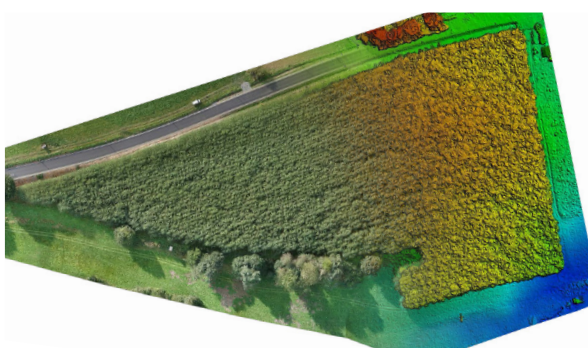




- > Wingspan 1950mm
- > 1950x705x200mm
- > 2.8 - 3.35 kg take-off weight
- > 1.5kg payload
- > 50km/h optimal mission speed
- > aprox. 1 hour effective flight time
- > Pixhawk 2.0 // DGPS + RTK ready
- > Batteries: 2-3x 5000mAh
- > Dual camera / sensor setup
- > FPV camera for pilotvision + HUD & OSD
- > High accuracy navigation system
- > Complete automatic mission planning



BLACKBIRD

The **BLACKBIRD** is a robust, high performance fixed wing drone. Its airframe is aerodynamically efficient and yet durable to withstand even a rough landing. Thanks to the modularity of the EPO frame, individual parts can be replaced when damaged. The variable wingspan allows for two configurations. With 1.5 meters it is more suited for high speed performance and with 2 meters wingspan it is perfect for stable, long endurance flights to cover up to 300 hectares per hour.

With a maximum payload of 1.5kg it can be operated with a dual camera set-up. For example with a high-res camera in the main body for precise photogrammetry and a compact multispectral or IR camera.

The fully redundant Pixhawk flight control enables a variety of automatic missions to cover large areas or long distances. Missions can be conducted fully automatic using either hand or catapult start and automatic landing in a pre-defined spot. The flight control's IMU has a pre-heating feature to allowing for missions even in cold conditions.

In short, it is the perfect drone for a wide range of professional applications in agriculture, forestry, mining, archeology, surveillance, (disaster) reconnaissance, power- and pipeline monitoring and many more - without the need to for a professional drone pilot.



COOPER COPTER GmbH

Wendenstraße 388
20537 Hamburg

M mail@coopercopter.com

W coopercopter.com

